

MobiScope

Portable Wi-Fi Microscope

Mobiscope delivers increased Probability of detection with new magnetic stage.

Feel more confident about your Assets and the decisions you need to make.



MOBISCOPE



In-situ/Field metallography is widely used for microstructure analysis on large parts (samples) that cannot be easily carried or where destructive preparation is not permissible such as storage tanks, piping system, power plants, etc. In-situ Metallography allows for quick on-site evaluation of a component. There are numerous advantages in using in-situ/field metallography.

- Portable and can be used on-site.
- Can be used to monitor quality of purchased components.
- Nondestructive with Replica techniques.
- Replicas are ideal for both flat and curved surfaces.
- Ability to evaluate microstructural changes in a component during its lifetime.
- Wide range of application area.

MOBISCOPE

MOBISCOPE is ideal for examination of prepared surfaces on site. In case of detailed analysis in the laboratory, replica kit is recommended.

MOBISCOPE portable microscope provides up to 40x and 600x total magnification with 4x and 40x objectives which are supplied as standard. Optional 50x and 80x objectives are available. Rechargeable built in LED illumination with no need of electrical supply.

With the magnet stage, MOBISCOPE can be easily attached against the surface of any ferrous material at any angles on flat and curved surfaces.

transport case with special foam inside customized for MOBISCOPE and the accessories for maximum protection during transportation.



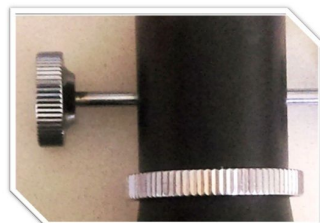
Wireless Screen



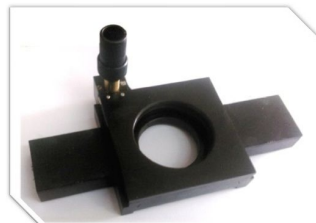
Wireless Camera with Battery backup



Portable Battery Unit



Fine/Coarse Focusing



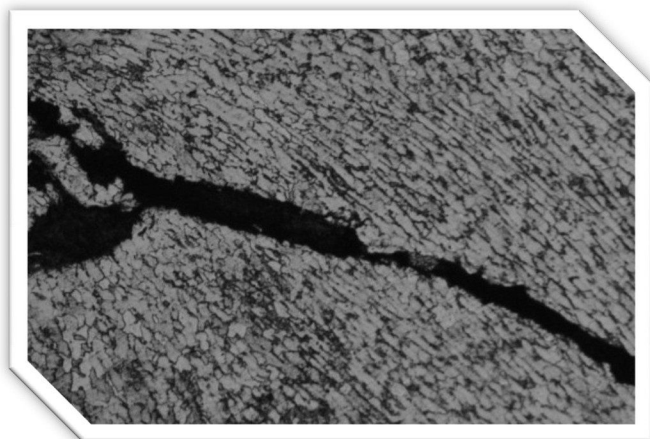
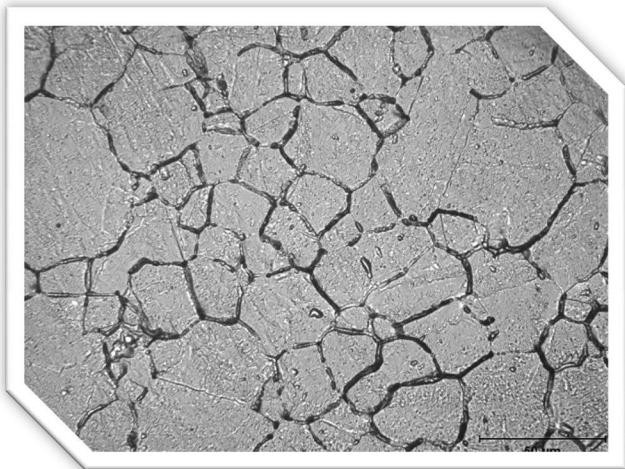
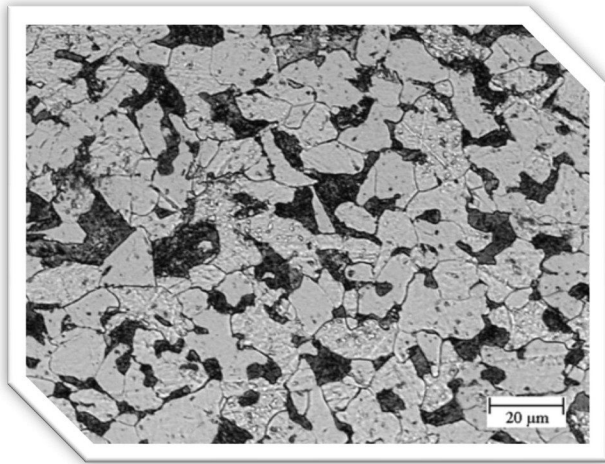
Magnetic Stage With XY Movement



Transport Case

Redefine Image Quality

The compact MOBISCOPE system doesn't sacrifice image quality for the sake of portability. Its white LED and crystal-clear HD LCD give inspectors the sharp, detailed images needed to ensure accurate detection and analysis, even in applications with poor lighting conditions. The HD LCD has enhanced image quality for better readability in sunny or snowy outdoor environments and harsh indoor lighting. An intuitive user interface makes it easy to save still images or record motion video to the SD card, Android device, Window device or IOS device.



MOBISCOPE Versatile Features

- **Magnetic Stage**—offers X-Y Movement at site with great holding power in multiple applications.
- **Wireless System**—offers to transmit a real time vision of camera to Android, Windows or IOS device.
- **Battery**—of MOBISCOPE is ready to give a power up to 5-7 hours.
- **LED technology**—produces more light output than most other microscope, uses less power and runs cooler than traditional illumination systems.
- **HD 7" LCD (1280x800)**—matches display to CCD imager performance for outstanding image quality.
- **Camera Processor**—enhances the probability of detecting and identifying locations with high speed, superior visibility and easier viewing.
- **Still images and motion video**—captures non-compressed BMPs, compressed JPGs or MPEG video.
- **Storage**—of device offers to capture images and videos up to 128 GB which is more than most other Microscope.

Technical Specifications

System

Magnification:	100x – 600x
Eyepieces:	10x – 15x
Objectives:	4x – 10x – 20x – 40x
Filters:	Green Filter – Blue Filter
Case Dimensions:	(18 in x 18in x 6 in)
Power:	5V, 10800 mAh or 20000 mAh Battery Pack AC: 230-264 VAC, 47-63 Hz DC: 5V 2A
Magnetic Stage:	With X-Y Movement & High Power Magnet.
Camera:	5 MP camera With Usb & Wifi Mode.
Construction:	Aluminum housings with integrated bumpers
LCD Monitor:	177.80 cm (7 in) HD LCD with Bright Back Light, 1280 x 800 resolution
Button Set:	Access user functions
Internal Memory:	8 GB flash memory
Data I/O Ports:	One USB & W-Fi.
Illumination Type:	White LED
White Balance:	Factory default or user defined
Battery Run Time:	5 hours - 7 hours

Operating Environment

Operating Temp:	-25°C to 90°C (-13°F to 202°F)
System Operating Temp:	-20°C to 46°C (-4°F to 115°F)
Storage Temperature:	-25°C to 60°C (-13°F to 140°F)
Ingress Protection:	IP55

Software

Operating System:	Real-time, multi-tasking operating System
File Manager:	Embedded file manager software Supporting: File and Folder auto naming, deleting, store to internal Flash.
Image Formats:	Bitmap (.BMP), JPEG (.JPG)
Video Format:	MPEG 4
Languages:	English, Japanese, Chinese.

Standard Accessories

- (1) Portable Microscope
- (2) Magnetic Stage with XY Movement
- (3) Wi-Fi Camera with Battery Backup
- (4) Extra Battery Unit
- (5) 10x – 15x Eyepieces
- (6) 4x – 10x – 20x – 40x Objectives
- (7) Lens For Camera
- (8) Filter Glass
- (9) 7inch Android Tablet
- (10) USB Cable For Camera
- (11) Charger for Tablet
- (12) Charger for Extra Battery Unit
- (13) Software CD
- (14) Driver Pan drive
- (15) Extra lamp for microscope
- (16) User Manual
- (17) Transport Case